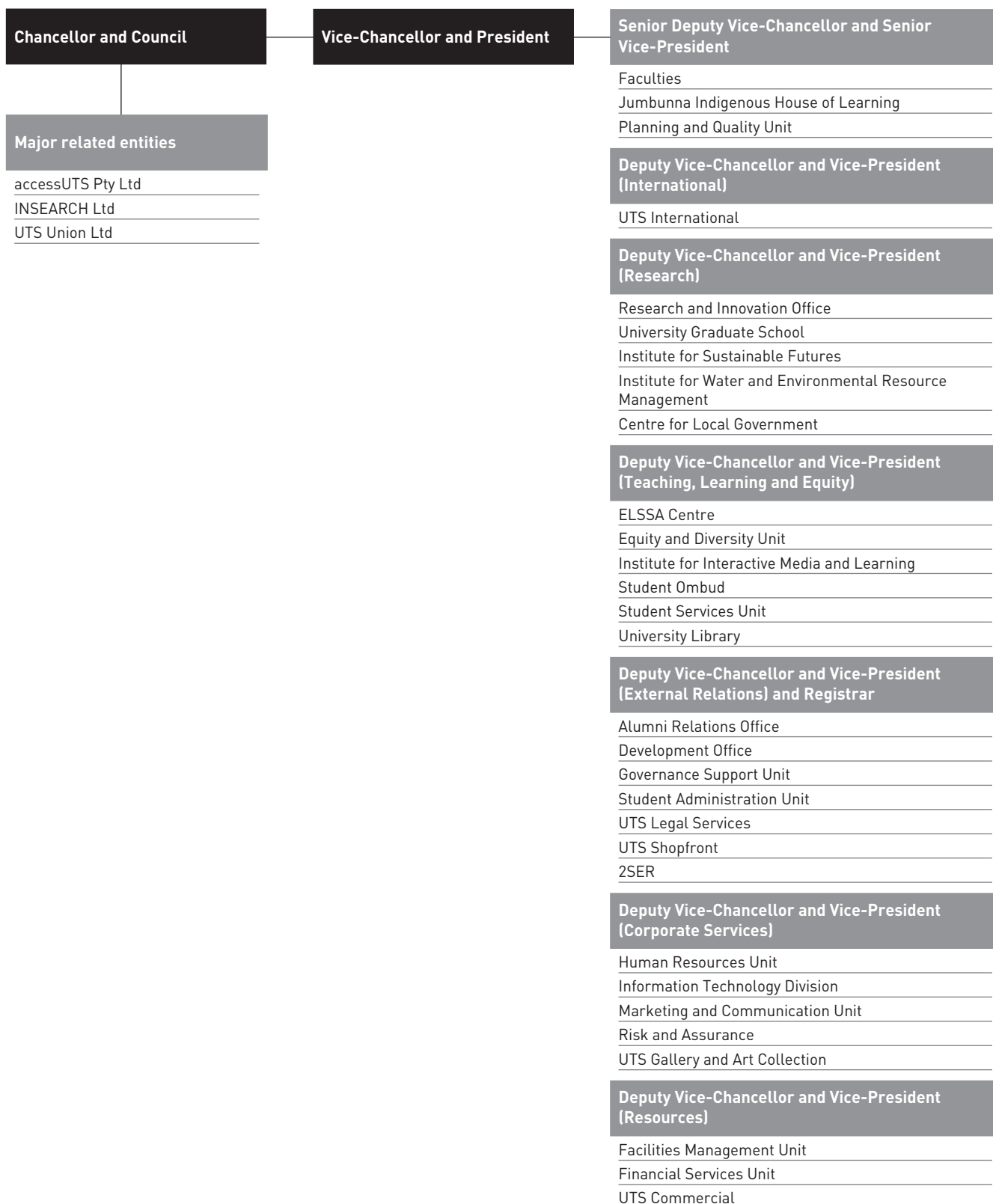


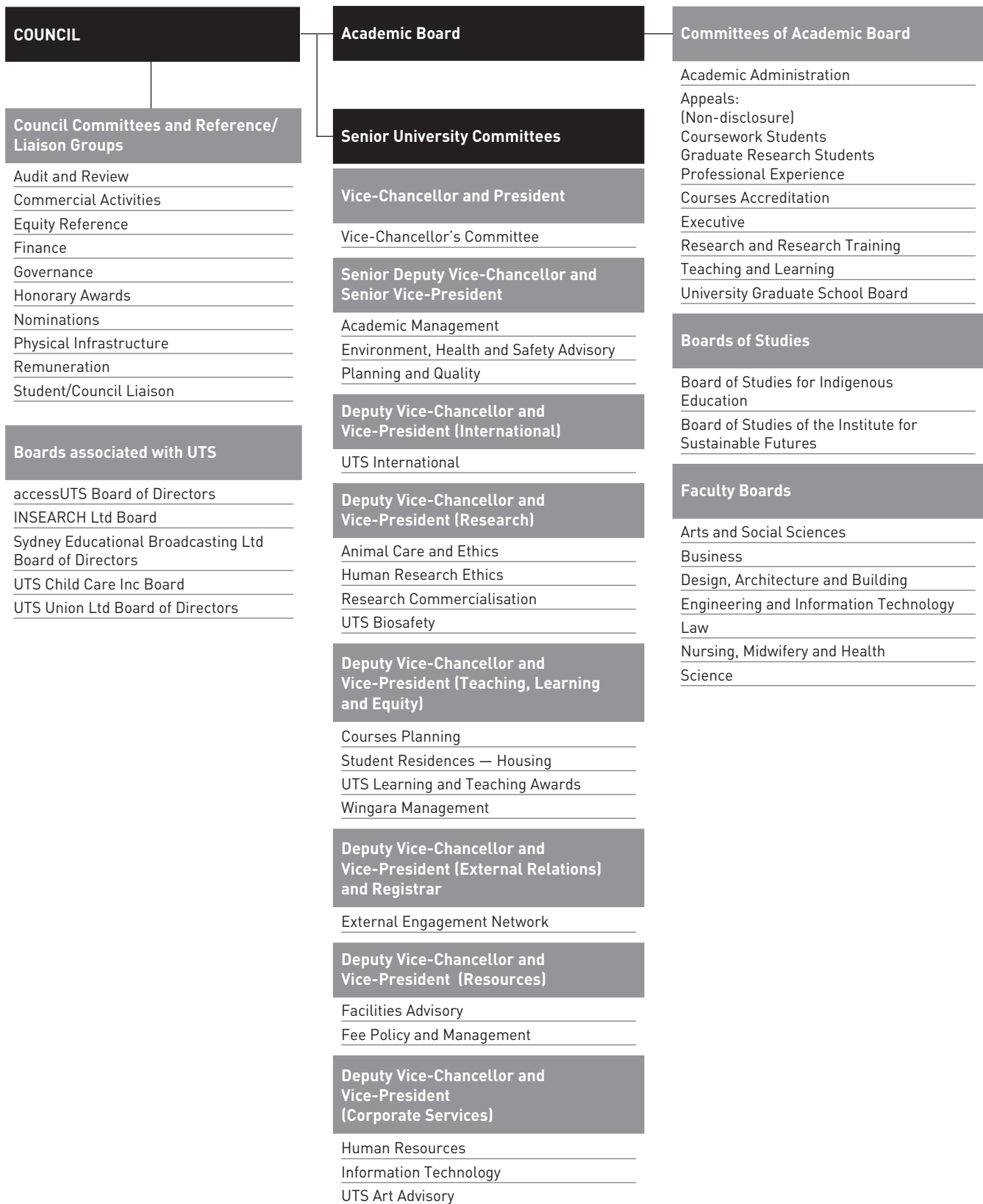
1 > GOVERNANCE AT UTS

UTS committee structure	12
UTS organisational structure	13
Governance at UTS	14
The Council of the University	14
Council committees and groups	16
Audit and Review Committee	16
Commercial Activities Committee	16
Equity Reference Group	16
Finance Committee	16
Governance Committee	16
Honorary Awards Committee	17
Nominations Committee	17
Physical Infrastructure Committee	17
Remuneration Committee	17
Student/Council Liaison Group	17
Academic Board	18
Academic Board committees	19
Faculty boards and committees	19
Faculty of Arts and Social Sciences	19
Faculty of Business	20
Faculty of Design, Architecture and Building	21
Faculty of Engineering and Information Technology	21
Faculty of Law	22
Faculty of Nursing, Midwifery and Health	23
Faculty of Science	25
Vice-Chancellor's Committee	27
Boards of controlled and other entities associated with UTS	27
accessUTS Board of Directors	27
INSEARCH Ltd Board	27
Sydney Educational Broadcasting Ltd Board of Directors	27
UTS Child Care Inc Board	28
UTS Union Ltd Board of Directors	28
University Honours	28
Emeritus Professors of the University	28
Fellows of the University	29
Honorary Doctors of Engineering	29
Honorary Doctors of Laws	29
Honorary Doctors of Letters	29
Honorary Doctors of Science	30
Honorary Doctors of the University	30
Honorary Master of Arts	30
Honorary Masters of the University	30
UTS Distinguished Service Award	30

UTS ORGANISATIONAL STRUCTURE



UTS COMMITTEE STRUCTURE



GOVERNANCE AT UTS

The University of Technology, Sydney, was established by the *University of Technology, Sydney, Act 1989* No 69, which replaced the *University of Technology, Sydney Act 1987* and the *University of Technology, Sydney (Miscellaneous Provisions) Act 1987*.

The Act is published in chapter 6 and at:

www.gsu.uts.edu.au/legislation/act/act.html

The object and functions of the University are outlined in section 6 of the Act.

Council, the governing body

The University is governed by a 20-member Council, including elected and appointed members who have the expertise and background relevant to the governance needs of the University. The Council's powers are set out in the *University of Technology, Sydney, Act 1989* and relevant By-law and Rules.

The Council meets at least six times a year and is chaired by the Chancellor, who is elected by the Council from among its members. Elected members of Council serve for two years and appointed members for four years.

The Vice-Chancellor and President (UTS Chief Executive Officer) is an ex officio member of Council and the Council governs the University with and through the Vice-Chancellor. In addition to the Vice-Chancellor's key role in advising Council, the Council is also advised by its standing committees. Council makes external appointments with relevant expertise to key committees, for example, the Audit and Review, Finance, and Physical Infrastructure committees.

Academic Board

Council has delegated to Academic Board a range of powers for academic matters. Academic Board, a major committee of Council and the primary forum in the University for the discussion and resolution of academic matters, has the power to determine academic policies within the University, and decide on the introduction, review, accreditation and discontinuation of award programs and eligibility for admission requirements.

Governance principles

To improve governance across UTS, the University's Council has adopted a set of governance principles. Offering a framework to be applied at all levels of the University's governance, the principles are to:

- focus on the University's purpose and goals
- perform effectively in clearly defined roles and responsibilities
- promote and act in accordance with UTS guiding principles
- make informed, transparent decisions within UTS accountability systems
- develop the effectiveness of the UTS Council and others responsible for governance
- recognise and engage the relevant interests of the University's stakeholders.

This framework is being used in the ongoing improvement of governance structures and processes.

THE COUNCIL OF THE UNIVERSITY

Council, as the governing body of the University, is responsible for ensuring that UTS achieves its statutory objective: the promotion of scholarship and academic excellence.

As constituted under section 9(1) of the *University of Technology, Sydney, Act 1989*.

Chancellor

Professor Vicki Sara, BA(Hons), PhD (Syd), DOC (Karolinska Institute), HonDSc (SQld), HonDSc (VU), HonDUniv (QUT), FAAS, FTSE; Chair, Australian Stem Cell Centre; Honorary Consul General for Sweden in Sydney
(15 December 2004 to 14 December 2008
15 December 2008 to 14 December 2012)

Deputy Chancellor

Warwick Watkins, JP, AMP:ISMP (Harv), MNatRes, DipScAg (UNE), HDA (Hawks), FAPI, HonFISA, FRICS; Director General, NSW Department of Lands, Surveyor General of NSW; Registrar General of NSW; Commissioner of Soil Conservation
(1 December 2006 to 30 November 2008
1 December 2008 to 30 November 2010)

Pro-Chancellors

Dr Valerie Levy, BA (Col), MA (Penn), PhD (Claremont); member, Ethics Committee, Royal Prince Alfred Hospital
(1 December 2006 to 30 November 2008
1 December 2008 to 30 November 2010)
Brian Wilson, MCom(Hons) (Auck); Managing Director, Lazard
(1 December 2006 to 30 November 2008
1 December 2008 to 30 November 2010)

Official members

Chancellor

Professor Vicki Sara, BA(Hons), PhD (Syd), DOC (Karolinska Institute), HonDSc (SQld), HonDSc (VU), HonDUniv (QUT), FAAS, FTSE; Chair, Australian Stem Cell Centre; Honorary Consul General for Sweden in Sydney
(15 December 2004 to 14 December 2008
15 December 2008 to 14 December 2012)

Vice-Chancellor and President

Professor Ross Milbourne, BCom, MCom (UNSW), PhD (Calif), FASSA, FAICD

Chair of Academic Board

Professor Anthony Baker, BSc(Hons), PhD (UNSW), HonPhD (Phranakhon Rajabhat), FRACI, FAICD; Professor of Chemistry, Faculty of Science, University of Technology, Sydney; Chair of NSW and ACT Committee of Chairs of Academic Boards and Senates; member, Board of Studies NSW; member, Higher Education Advisory Committee, NSW Department of Education and Training
(first elected 14 March 2003 to 31 October 2003
re-elected 1 November 2003 to 31 October 2005
re-elected 1 November 2005 to 31 October 2007
re-elected 1 November 2007 to 17 March 2009)

Chair of Academic Board

Professor Thomas Clarke, BSocSc (Birm), MA, PhD (Warw)
(18 March 2009 to 31 December 2010)

Members appointed by the Minister

Dianne Leckie, BBus (KCAE), MEcon (Macq), FCPA, MAICD; Consultant
 (7 February 2002 to 31 October 2002
 1 November 2002 to 31 October 2006
 1 November 2006 to 31 October 2010)

Dr Ron Sandland, AM, BSc(Hons) (Syd), PhD (UNSW), FTSE
 (1 November 2008 to 31 October 2012)

The Hon. Penelope (Penny) Sharpe, MLC, Member for Marrickville, NSW Legislative Council
 (1 November 2008 to 31 October 2010)

Russell Taylor, MBA, GradDipPSM (UTS), GradDipArts (ANU); Chief Executive Officer, NSW Aboriginal Housing Office
 (1 November 2006 to 31 October 2008
 1 November 2008 to 31 October 2012)

Warwick Watkins, JP, AMP:ISMP (Harv), MNatRes, DipScAg (UNE), HDA (Hawks), FAPI, HonFISA, FRICS; Director General, NSW Department of Lands, Surveyor General of NSW; Registrar General of NSW; Commissioner of Soil Conservation
 (1 November 2002 to 31 October 2006
 1 November 2006 to 31 October 2010)

Brian Wilson, MCom(Hons) (Auck); Managing Director, Lazard
 (1 November 2006 to 31 October 2010)

Members appointed by Council

Tim Dugan, BAppSc (MedRad) (RMIT), MBA (MBS), GradDipCompSecPrac CSA; Chief Executive Officer, Sydney Cancer Foundation
 (1 November 2008 to 31 October 2012)

Robert Kelly, BComm (UNSW), LLB, LLM (Syd), MBA (UNSW), FCIS, FAICD; Barrister
 (1 November 2006 to 31 October 2010)

Michael Sexton, SC, LLB(Hons) (Melb), LLM (Virginia); Solicitor General for New South Wales
 (12 December 2005 to 31 October 2008
 1 November 2008 to 31 October 2012)

Dr Katherine Woodthorpe, BSc(Hons) (UMIST), PhD (Leic), FAICD; Chief Executive, Australian Private Equity and Venture Capital Association Ltd; Chair, Cooperative Research Centre for Antarctic Climate and Ecosystems; Director, pSivida Ltd; Director, INSEARCH Ltd
 (1 December 2003 to 31 October 2006
 1 November 2006 to 31 October 2010)

Members of Convocation appointed by Council

Megan Cornelius, AM, BA (Syd), FAICD, FAIM, FACS; Harvard Leadership Program, Australian Institute of Company Directors Diploma; Deputy Chair, National Offshore Petroleum Safety Authority Board; Director, Expertise Australia Group and Expertise Technology Pty Ltd; Fellow of UTS; member, Advisory Board of UTS Key University Research Centre for Innovative Collaborations, Alliances and Networks
 (14 April 2003 to 31 October 2006
 1 November 2006 to 31 October 2008
 1 November 2008 to 31 October 2012)

Dr Valerie Levy, BA (Col), MA (Penn), PhD (Claremont); member, Ethics Committee, Royal Prince Alfred Hospital
 (1 November 1998 to 31 October 2002
 1 November 2002 to 31 October 2006
 1 November 2006 to 31 October 2008
 1 November 2008 to 31 October 2010)

Members of academic staff

Professor Jenny Onyx, MA (Well), PhD (Macq); Professor of Management, Faculty of Business, University of Technology, Sydney
 (1 November 2006 to 31 October 2008
 1 November 2008 to 31 October 2010)

Professor Greg Skilbeck, BSc(Hons), PhD (Syd), MAIG; Associate Dean (Research and Development), Professor of Earth Sciences, Faculty of Science, University of Technology, Sydney
 (1 November 2006 to 31 October 2008
 1 November 2008 to 31 October 2010)

Member of non-academic staff

Christopher Cahill, GradDipInfSys (CSturt); Director, Information Technology Division, University of Technology, Sydney
 (1 November 2004 to 31 October 2006
 1 November 2006 to 31 October 2008
 1 November 2008 to 31 October 2010)

Undergraduate student

Michelle Swainson; enrolled Bachelor of Communication, University of Technology, Sydney
 (1 November 2008 to 31 October 2010)

Postgraduate student

Mayank Sharma, enrolled Master of Business Administration, University of Technology, Sydney
 (1 November 2008 to 31 October 2010)

Secretary to Council

Dr Rosalind Dubs, BSc(Hons) (ANU), Dr ès Sc (Lausanne), FAICD

COUNCIL COMMITTEES AND GROUPS

Audit and Review Committee

Vice-Chancellor and President

Professor RD Milbourne

Chair — an external member of Council, but not of the Finance Committee, appointed for expertise in audit and review

R Kelly

Four other external members, of whom all should have strategic management expertise and experience in accounting, auditing or risk; up to two should be members of Council with qualifications and experience related to the operations of the University; and at least one should be a member of the Finance Committee (whether or not they are also a member of Council)

D Leckie

R O'Connor

B Rock

R Taylor

Commercial Activities Committee

Chair — one of the external members of Council who have been appointed to Council for expertise in commercial activities

Dr K Woodthorpe

Four other external members, of whom all should have strategic commercial skills and experience; and up to two may also be members of Council with qualifications and experience related to the operations of the University

T Dugan

G Phillips

R Sandland

vacant

Vice-Chancellor and President

Professor RD Milbourne

Equity Reference Group

An external member of Council (Chair)

Dr V Levy

Deputy Vice-Chancellor and Vice-President (Teaching, Learning and Equity)

Professor S Alexander

Director, Equity and Diversity Unit

J Stoddart

Equity and Diversity Coordinator

K Wilson

Director, Human Resources Unit, or nominee

J Gilmore

Director, Student Services, or nominee

M Flood

Director, Jumbunna Indigenous House of Learning

Professor M Nakata

Staff representative of equity target group: women

vacant

Staff representative of equity target group: Australian Indigenous people

J Tranter

Staff representative of equity target group: people of NESB
Associate Professor H Scheeres

Staff representative of equity target group: people with disabilities

L Vidoni

Staff representative of equity target group: gay and lesbian people

Dr P Caldwell

President, NTEU UTS Branch, or nominee

D Freeder

Chair, CPSU UTS Branch, or nominee

D Cobley-Finch

Student representative of equity target group: women

S Norman

Student representative of equity target group: Australian Indigenous people

G Grose

Student representative of equity target group: people of NESB

A Lin

Student representative of equity target group: people with disabilities

D Mills

Student representative of equity target group: gay and lesbian people

J Flestado

President, Students' Association, or nominee

P McNeilly Rutledge

President, UTS Union, or nominee

B Sharma

Finance Committee

Chair — an external member of Council appointed for expertise in financial matters

B Wilson

Four other external members, of whom all should have strategic financial expertise and experience; and at least two should be members of Council with qualifications and experience related to the operations of the University

M Cornelius, AM

D Leckie

J Leotta

M McLellan

Vice-Chancellor and President

Professor RD Milbourne

Governance Committee

An external member of Council (Chair)

Professor V Sara

Vice-Chancellor and President

Professor RD Milbourne

Two or three members external to the University (who may also be members of Council), with particular skills and experience in governance matters, appointed by Council

R Kelly

M Sexton

Deputy Vice-Chancellor and Vice-President (External Relations) and Registrar

Dr R Dubs

Honorary Awards Committee

Chancellor (Chair)

Professor V Sara

Deputy Chancellor

W Watkins

Vice-Chancellor and President

Professor RD Milbourne

A Deputy Vice-Chancellor

Professor P Booth

Three external members of Council

D Leckie

V Levy

R Taylor

One academic staff member of Council

Professor J Onyx

Chair, Academic Board

Professor T Clarke

Deputy Vice-Chancellor and Vice-President (External Relations) and Registrar

Dr R Dubs

Nominations Committee

Chancellor

Professor V Sara

Vice-Chancellor and President

Professor RD Milbourne

Three persons appointed by Council, including one ministerial nominee and one Council appointee whose terms of appointment are not about to expire

Dr C Hirst

P Kelly

W Watkins

Physical Infrastructure Committee

Chair — an external member of Council appointed for expertise in strategic capital development and management

W Watkins

Four other external members, of whom up to two may also be members of Council with qualifications and experience related to the operations of the University; at least one should be a member of the Finance Committee, whether or not also a member of Council; and all should have strategic skills and experience involving capital development and management

J Hill

G Jahn

P Sharpe, MLC

B Wilson

Vice-Chancellor and President

Professor RD Milbourne

Remuneration Committee

Chancellor

Professor V Sara

Deputy Chancellor

W Watkins

One person appointed by Council, whose term of appointment is not about to expire

D Leckie

Student/Council Liaison Group

An external member of Council (Chair)

M Sexton

An external member of Council (Deputy Chair)

M Cornelius, AM

Student members of Council

M Sharma

M Swainson

Deputy Vice-Chancellor and Vice-President (Teaching, Learning and Equity) or nominee

Professor S Alexander

Director, Student Services, or nominee

to be advised

An Associate Dean (either Teaching and Learning or Research, or equivalent) nominated by the associate deans

to be advised

President, Students' Association, or nominee

P McNeilly Rutledge

Overseas Students Officer of the Students' Association

to be advised

President, UTS Union, or nominee

to be advised

Student representative of UTS Union clubs

to be advised

Student representative of UTS Students' Association clubs

to be advised

UTS student elected by and from the UTS students resident in University accommodation

to be advised

Indigenous student representative

to be advised

The undergraduate student members of Academic Board, as elected from each faculty

to be advised

The postgraduate student members of Academic Board (note that one of the postgraduate student members of Academic Board is required to be a research degree student)

to be advised

ACADEMIC BOARD

Academic Board is a major committee of Council and is the primary forum in the University for the discussion and resolution of academic matters. Academic Board has been delegated power to determine academic policies within the University and decide on the introduction, review, accreditation and discontinuation of award programs and eligibility for admission requirements.

The following membership is effective from 18 March 2009.

Chair

Professor T Clarke

Deputy Chair

to be advised

Ex officio members

Vice-Chancellor

Professor RD Milbourne

Senior Deputy Vice-Chancellor and Senior Vice-President

Professor P Booth

Deputy Vice-Chancellor and Vice-President (International) (Acting)

Emeritus Professor R Lynch

Deputy Vice-Chancellor and Vice-President (Research)

Professor S Rowley

Deputy Vice-Chancellor and Vice-President (Teaching, Learning and Equity)

Professor S Alexander

Dean, Arts and Social Sciences

Professor T van Leeuwen

Dean, Business

Professor R Green

Dean, Design, Architecture and Building

Professor D Luscombe

Dean, Engineering and Information Technology

Professor A Johnston

Dean, Law

Professor J McKeough

Dean, Nursing, Midwifery and Health

Professor J Daly

Dean, Science

Professor B Milthorpe

Dean, University Graduate School

Professor M Tennant

Associate Dean (Academic), Arts and Social Sciences

Associate Professor G Riordan

Associate Dean (Research), Arts and Social Sciences

Associate Professor C Chappell

Associate Dean (Teaching and Learning), Business

Professor T Taylor

Associate Dean (Research and Development) (Acting), Business

Professor J Edwards

Associate Dean (Teaching and Learning), Design, Architecture and Building

Dr L McWhinnie

Associate Dean (Research), Design, Architecture and Building

Professor K Dorst

Associate Dean (Teaching and Learning), Engineering and Information Technology

Dr W Brookes

Associate Dean (Research), Engineering and Information Technology

Professor H Nguyen

Associate Dean (Teaching and Learning), Law

B Olliffe

Associate Dean (Research), Law

Professor L Hitchens

Associate Dean (Teaching and Learning), Nursing, Midwifery and Health

Professor D Dignam

Director of Research, Nursing, Midwifery and Health

Professor D Elliott

Associate Dean (Teaching and Learning), Science

Associate Professor A Piper

Associate Dean (Research and Development), Science

Professor G Skilbeck

University Librarian

Dr A Byrne

President, UTS Students' Association

P McNeilly Rutledge

Chair, Board of Studies for Indigenous Education

Professor M Nakata

Elected members

Members elected by and from the academic staff of each faculty

Arts and Social Sciences

Dr J Browitt

Professor L Farrell

Dr T Macris

Associate Professor S Schuck

Business

Associate Professor C Burton

Professor T Clarke

Professor T Hall

Dr A Hingorani

Associate Professor E Schlögl

R Trayler

Design, Architecture and Building

Professor S Boydell

Associate Professor C Rice

Engineering and Information Technology

Associate Professor D Eager

Associate Professor X He

Professor D Hoang

Associate Professor G Hong

Associate Professor T Robertson

Law

K Gould

Associate Professor S Varnham

Nursing, Midwifery and Health

T Buckley

Dr P Farrar

Science

Dr K Broady

Dr L Groen

Associate Professor L Kirkup

Dr P Meier

Elected student members*Arts and Social Sciences*

D Stone

Business

M Sharma

Design, Architecture and Building

to be advised

Engineering and Information Technology

J Riad

Law

R Jones

Nursing, Midwifery and Health

E Makepeace

Science

K Petrou

One postgraduate research student elected by and from the postgraduate research students of the University

Science

K Grimwood

ACADEMIC BOARD COMMITTEES

In 2008, the UTS Council approved the new composition of the Academic Board, to take effect from 18 March 2009. Once operational, the board will examine its committee structure to ensure it continues to meet the requirements of the board.

Further information about the committees of Academic Board is available from the Academic Board website at:

www.gsu.uts.edu.au/academicboard

FACULTY BOARDS AND COMMITTEES**FACULTY OF ARTS AND SOCIAL SCIENCES****Faculty Board in Arts and Social Sciences**

(Note: The structure and membership of the Faculty Board in Arts and Social Sciences is subject to review and change in the first half of 2009.)

Ex officio members*Dean (Chair)*

Professor T van Leeuwen

Associate Dean (Academic Programs)

Associate Professor G Riordan

Associate Dean (Research)

Associate Professor C Chappell

Faculty Manager

vacant

Academic Group Heads

Professor W Bacon

Associate Professor J Dale

Professor A Jakubowicz

Professor R Johnston

Professor A Pennycook

Professor D Slade

I Vanni

Academic Program Heads

P Allatson

Associate Professor P Aubusson

R Flowers

K Gordon

Research Degrees Head

Professor N Solomon

Nominated members (7)

Nominee of the University Librarian

Nominees of the Deputy Vice-Chancellor and Vice-President (Teaching, Learning and Equity), the Institute for Interactive Media and Learning, and the ELSSA Centre (2)

Members of the academic staff from the faculty boards of all other faculties (4)

Elected members (41)

Students (Education program) (2)

Students (Communication program) (2)

Students (International Studies program) (2)

Research students (2)

Professional staff (8)

Academic staff (25)

Faculty Advisory Committee**Faculty members***Dean*

Professor T van Leeuwen

Associate Dean (Academic Programs)

Associate Professor G Riordan

Associate Dean (Research)

Associate Professor C Chappell

Faculty Manager

vacant

External members

C Hamilton (Chair)

T Alegounarias

B Baird

J Brogden

L Coombes

M Edwards

R Gibson

L Gribble

R Huntley

M Simons

FACULTY OF BUSINESS

Faculty Board in Business

(membership as at 1 November 2008)

Ex officio members

Dean (Chair)

Professor R Green

Associate Dean (Teaching and Learning)

Professor T Taylor

Associate Dean (Research and Development)

Professor J Edwards

Associate Dean (International) and Head, Graduate School of Business

Associate Professor B Hunt

Executive Director, Faculty Administration

W Paterson

MBA Director

A Hermens

Director, Undergraduate Business Courses

R Trayler

Heads of School

Accounting

Associate Professor P Wells

Finance and Economics

Professor T Hall

Leisure, Sport and Tourism

Associate Professor B Hayllar

Management

vacant

Marketing

Professor S Gudergan

Nominated members

University Library

D Freeder

Institute for Interactive Media and Learning

K Waite

Faculty of Engineering and Information Technology

vacant

Faculty of Law

A Dwyer

Manager, Haymarket Student Centre

R Jones

Elected members

Accounting

Dr D Bond

F Giacobbe

Dr S Topple

vacant

Finance and Economics

D Cotton

Dr D Goldbaum

T Hutcheson

Associate Professor D Michayluk

Leisure, Sport and Tourism

T Griffin

Dr P Jonson

Associate Professor A Murphy

Dr J Small

Management

Dr N Nikolova

Dr A Pullen

Dr K Redfern

K Spooner

Marketing

P Burke

Dr G Massey

vacant (2)

Administration staff

S Ng

Undergraduate students

M Evans

C Luo

Postgraduate students

M Jarman

T Kao

Clerk to faculty board

G Nath

Dean's Advisory Committee

Dean

Professor R Green

Associate Dean (Teaching and Learning)

Professor T Taylor

Associate Dean (Research and Development)

Professor J Edwards

Associate Dean (International) and Head, Graduate School of Business

Associate Professor B Hunt

Executive Director, Faculty Administration

W Paterson

Administration staff representative

A Podzuns

Academic staff representative

Associate Professor C Burton

Heads of School

Accounting

Associate Professor P Wells

Finance and Economics

Professor T Hall

Leisure, Sport and Tourism

Associate Professor B Hayllar

Management

vacant

Marketing

Professor S Gudergan

FACULTY OF DESIGN, ARCHITECTURE AND BUILDING

Faculty Board in Design, Architecture and Building

Chair

Professor D Luscombe

Research Management Committee

This committee manages academic and student-related issues.

Chair

Professor K Dorst

Teaching and Learning Quality Committee

Chair

Dr L McWhinnie

FACULTY OF ENGINEERING AND INFORMATION TECHNOLOGY

Faculty Board in Engineering and Information Technology

Ex officio members

Dean (Chair)

Professor A Johnston

Associate Dean (International and Enterprise Development)

Associate Professor T Anderson

Associate Dean (Teaching and Learning): Engineering

Dr T Aubrey

Associate Dean (Teaching and Learning): Information Technology

Dr W Brookes

Associate Dean (Research and Development)

Professor H Nguyen

Head, School of Civil and Environmental Engineering

Professor B Samali

Head, School of Computing and Communications

Associate Professor E Lawrence

Head, School of Electrical, Mechanical and Mechatronic Systems

Professor J Zhu

Head, School of Software

Dr R Raban

Head, School of Systems, Leadership and Management

Professor IT Hawryszkiewicz

Faculty Manager

D Knight

Manager, Faculty Academic Programs Office

S Tanuwijaya

Nominated members (two-year term)

Nominee of the University Librarian

J Chelliah

Nominee of the Deputy Vice-Chancellor and Vice-President (Teaching, Learning and Equity)

P Kandlebinder

Nominee, Faculty of Arts and Social Sciences

vacant

Nominee, Faculty of Business

R Trayler

Nominee, Faculty of Science

M Coupland

Elected members (two-year term)

Fifteen members of the academic staff elected by and from the academic staff, comprising three academic staff representatives from each of the five schools, of whom one must be a professor from each school. This includes election of research fellows of the faculty.

School of Civil and Environmental Engineering

Associate Professor J Ball

vacant (professorial position)

vacant

School of Computing and Communications

Professor R Braun

Dr W Brookes

Associate Professor X He

School of Electrical, Mechanical and Mechatronic Systems

Dr AA Al-Jumaily

Professor G Dissanayake

Associate Professor D Liu

School of Software

Associate Professor Y Pisan

Professor C Zhang

Professor D Zowghi

School of Systems, Management and Leadership

Dr J Underwood

vacant (professorial position)

vacant

One member of the faculty's support staff, elected by and from the support staff of the faculty

K Liu

Elected student members (one-year term)

One undergraduate student enrolled in an engineering undergraduate program

A Rajendran

One undergraduate student enrolled in an IT undergraduate program

J Nichols

One postgraduate student enrolled in an engineering postgraduate program (coursework or research)

vacant

One postgraduate student enrolled in an IT postgraduate program (coursework or research)

vacant

Co-opted members

The board will, at its discretion, co-opt members of the academic and/or support staff with relevant skills and/or expertise relevant to the business of the board.

Committees of the faculty board

Courses Committee

Faculty Student Conduct Committee

Library Reference Committee

Research Degrees Committee

Research Management Committee

Results Ratification Committee

Student Assessment Review Committee

Industry Advisory Network

Chair

B Grey, Group Managing Director
Bishop Technology Group Limited

Members

Adjunct Professor W Ariyaratne, Principal Bridge Engineer

RTA Operations

Dr J Best, Vice-President Technology and Research Development

Thales Australia

T Brennan, Global Chief Information Officer
Lend Lease Corporation

L Butterfield, Chief Executive Officer
McLachlan Lister Pty Limited

G Campbell, Non-Executive Director
Worley Parsons

R Christie, AM

R Clark, Chief Technology Officer
Alcatel-Lucent Australasia

M Conlin, Regional Chief Technologist, Applications, Australia, New Zealand and Asia
EDS (a HP company)

Dr D Cook, Managing Director
Davcem Consulting Services P/L

W Cox, Director Operations, NSW / ACT
Connell Wagner

A Croker, Manager, Power and Industry NSW
Sinclair Knight Merz

K Daniel, Director
Optiscan Limited

Professor M Dureau, Executive Director
The Warren Centre, University of Sydney

Dr S Farrugia, Vice-President Technology
ResMed Ltd

R Fowler, Vice-President European Service Providers
CISCO Systems

J Hewitt, Managing Director
Yokogawa Australia Pty Ltd

D Hudson, Executive General Manager — Risk
Management

Leighton Holdings Limited

M Kirby, Director
Global Ideas Group

Dr J Nutt, AM

K Payten, Australia / NZ Deal Hub Executive
IBM

B Pentecost, AM

C Raine, Country President
Alstom Australia Limited

Dr M Sargent, AM, Managing Director
MA Sargent & Associates Pty Ltd

Dr K Schott, Managing Director
Sydney Water

R Slee, Vice-President
Oracle

W Southwood, Director
Wallaga Pty Ltd

W Strachan, Group General Manager, NSW Water
Solutions

NSW Department of Commerce

I Stuart

Connell Wagner

R White, CEO
CargoWise

Adjunct Professor AC Wightley

J Withers, Chief Executive
Multiwave Pty Ltd

A Wong, Chair
Australian Computer Society NSW

FACULTY OF LAW

Faculty Board in Law

Ex officio members

Dean (Chair)

Professor J McKeough

Associate Dean (Teaching and Learning)

B Olliffe

Associate Dean (Research)

Professor L Hitchens

Professors

S Blay

J Millbank

A Mowbray

P Redmond

Faculty Manager

P Holt

Student Centre Manager (Haymarket)

R Jones

Nominated members*Nominee of University Librarian*

B Tiffen

Nominee of the Dean from the Faculty Board in Business

F Portelli

Nominee of the Dean from the Faculty of Engineering and Information Technology

J Brennan

Nominee of the Dean from the Faculty Board in Science

Professor C Roux

One nominee of the Chief Justice of NSW

The Hon. B Cohen, QC

One nominee of the President of the Law Society of NSW

S Roulstone

One nominee of the President of the Bar Council of NSW

G Lindsay, SC

Elected members*Fifteen academic staff members elected by and from the academic staff of the faculty*

K Bubna-Litic

S Carr-Gregg

M Evers

K Gould

C Hawes

G Holland

F Johns

J Lancaster

G Moore

Dr S Palassis

W Siow

P Stewart

Associate Professor A Stuhmcke

S Varnham

vacant (1)

Two support staff members elected by and from the support staff of the faculty

M Lazarou

K Sherwood

Four students elected by and from the students of the faculty, one of whom shall be a postgraduate student

D Bark

A Ho

A Rybak

B Silva

Faculty of Law Executive Council**Ex officio members***Dean*

Professor J McKeough

Associate Dean (Teaching and Learning)

B Olliffe

Associate Dean (Research)

Professor L Hitchens

Faculty Manager

P Holt

Deans Advisory Committee

Associate Professor A Stuhmcke

External members

B McFadyen (Chair)

The Hon. Judge L Ashford

E Broderick

L Glanfield

N Goodman

G Kelly

The Hon. Justice K Lindgren

R McGeoch

FACULTY OF NURSING, MIDWIFERY AND HEALTH*Dean (Chair)*

Professor J Daly

Faculty Manager (Secretary)

G Goodwin-Moore

Associate Dean (Teaching and Learning)

Professor D Dignam

Director of Research

Professor D Elliott

*All members of the professoriate**All academic staff (except those on PEP)**Academic Programs Manager*

T Perera

Nominated members*Nominee of the Faculty Board in Business*

Dr A Murphy

Nominee of the Faculty Board in Law

vacant

Nominee of the Faculty Board in Science

Dr D van Reyk

Nominee of the Institute for Interactive Media and Learning

J Pizzica

Nominee of the University Librarian

J Chelliah

Elected members*One support staff member from the faculty*

L Barton

Four student members from the faculty

M Fortmann

E Makepeace

J Vernon

vacant

Faculty Courses Committee**Ex officio members***Associate Dean (Teaching and Learning) (Chair)*

Professor D Dignam

Academic Programs Manager (Secretary)

T Perera

Academic Clinical Advisor

vacant

Director of International Activities

L Seaton

Director of Studies (Midwifery)

J Gray

Director of Health Services Management Programs

R Baldwin

Director of Nursing Studies

vacant

Director of Postgraduate Nursing Studies

Dr L Hamlin

Director of Undergraduate Nursing Studies

Dr K Kilstoff

Faculty Librarian

J van Balen

Academic Liaison Officer

F Rogan

Chair, Faculty Quality Committee

A Wyllie

Elected members

Four members of academic staff

Dr P Farrar

J Forber

F Orr

R Smith

Research Committee

Ex officio members

Dean

Professor J Daly

Director of Research (Chair)

Professor D Elliott

Doctoral Courses Coordinator

L Seaton

Masters Honours Courses Coordinator

Associate Professor M Fry

Bachelor Honours Courses Coordinator

Dr R Gallagher

Research Administrator

Dr J Funnell

Elected members

Director of Centre (or nominee)

Professor C Homer

Two academic staff members from the faculty

T Buckley

L Conlon

Two professors elected from the professoriate

M Foureur

S McKinley

Dean's Advisory Committee

Ex officio members

Dean (Chair)

Professor J Daly

Faculty Manager (Secretary)

G Goodwin-Moore

Associate Dean (Teaching and Learning)

Professor D Dignam

Director, Centre for Midwifery, Child and Family Health

Professor C Homer

Director, Centre for Health Services Management

Professor C Duffield

Director of Research

Professor D Elliott

Academic Clinical Advisor

vacant

Director of International Activities

L Seaton

Director of Health Services Management Programs

R Baldwin

Director of Studies (Midwifery)

J Gray

Director of Nursing Studies

vacant

Director of Postgraduate Nursing Studies

Dr L Hamlin

Director of Undergraduate Nursing Studies

Dr K Kilstoff

Elected representatives

Four members of academic staff

M Foureur

Associate Professor R Gallagher

S Ladanyi

vacant

One member of support staff from the faculty

M Stephens

One professor elected from the professoriate

vacant

Faculty Library Committee

Ex officio members

Faculty Librarian

J van Balen

Elected representatives

S Matiuk (Chair)

K Kellehear

Quality Committee

Ex officio members

Quality Coordinator (Chair)

A Wyllie

Associate Dean (Teaching and Learning)

Professor D Dignam

Director of Research

Professor D Elliott

Director of Studies (Midwifery)

J Gray

Director of Undergraduate Nursing Studies

Dr K Kilstoff

Director of Postgraduate Nursing Studies

Dr L Hamlin

Director of International Activities

L Seaton

Academic Clinical Advisor

vacant

Academic Programs Manager

T Perera

Elected members

Two academic staff members from the faculty

N Brown

J Forber

FACULTY OF SCIENCE

Faculty Board in Science

Dean (Chair)

Professor B Milthorpe

Associate Dean (Teaching and Learning)

Associate Professor A Piper

Associate Dean (Research and Development)

Professor G Skilbeck

General Manager, Faculty Administration

Dr M Ainsworth

General Manager, Faculty Technical Services

C Edinger-Reeve

Head of Department of Chemistry and Forensic Science

Associate Professor M Dawson

Head of Department of Environmental Sciences

Dr A Pulkownik

Head of Department of Medical and Molecular Biosciences

Associate Professor K Broady

Head of Department of Physics and Advanced Materials

Associate Professor MJ Ford

Head of Department of Mathematical Sciences

Dr T Langtry

Director of Undergraduate Programs

Dr P Meier

Professors

Professor AT Baker

Department of Chemistry and Forensic Science

Professor D Booth

Department of Environmental Sciences

Professor MB Cortie

Director of the Institute for Nanoscale Technology

Professor D Eamus

Department of Environmental Sciences

Professor JT Ellis

Department of Medical and Molecular Biosciences

Professor A Novikov

Department of Mathematical Sciences

Professor C Palmer

Director of the Institute for Water and Environmental
Resource Management

Professor E Platen

Faculty of Business

Professor RL Raison

Department of Medical and Molecular Biosciences

Professor CP Roux

Department of Chemistry and Forensic Science

Professor AM Simpson

Department of Medical and Molecular Biosciences

Professor DJ Street

Department of Mathematical Sciences

Professor M Wallach

Department of Medical and Molecular Biosciences

Nominated members

Faculty of Business

Dr O Konstandatos

Faculty of Engineering and Information Technology

Professor R Braun

Faculty of Law

L Houston

Faculty of Nursing, Midwifery and Health

J Forbes

Institute for Interactive Media and Learning

S Housego

University Library (City campus)

J Chelliah

Elected members

A Beavis

Department of Chemistry and Forensic Science

Dr M Braun

Department of Environmental Sciences

G Caprarelli

Department of Environmental Sciences

M Craddock

Department of Mathematical Sciences

Dr L de Filippis

Department of Environmental Sciences

Dr H Green

Department of Medical and Molecular Biosciences

Dr L Groen

Department of Mathematical Sciences

Dr P Hansen

Department of Medical and Molecular Biosciences

Dr G Heness

Department of Physics and Advanced Materials

Dr W Kalceff

Department of Physics and Advanced Materials

Dr J Kalman

Department of Chemistry and Forensic Science

Dr S Lal

Department of Medical and Molecular Biosciences

E Lidums

Department of Mathematical Sciences

Dr A McDonagh
Department of Chemistry and Forensic Science
Associate Professor K McGuffie
Department of Physics and Advanced Materials
Dr B Moore
Department of Mathematical Sciences
Dr U Munro
Department of Environmental Sciences
B Murray
Department of Environmental Sciences
Dr N Nassif
Department of Medical and Molecular Biosciences
Dr B O'Brien
Department of Medical and Molecular Biosciences
C Poulton
Department of Mathematical Sciences
X Qu
Department of Medical and Molecular Biosciences
Associate Professor P Ralph
Department of Environmental Sciences
Dr J Schulte
Department of Physics and Advanced Materials
L Sedger
Department of Medical and Molecular Biosciences
Dr J Tarran
Department of Environmental Sciences
Dr P Thomas
Department of Chemistry and Forensic Science
Dr S Valenzuela
Department of Medical and Molecular Biosciences
R Ward
Department of Chemistry and Forensic Science
CD Wong
Department of Mathematical Sciences
C Zaslowski
Department of Medical and Molecular Biosciences

Support staff

Technical services

G Armstrong
Dr B Booth
J Cameron
P Jones
K McBean
B Peters
J Phillips
R Shimmon

Student members

N Alfaris
J Chou
S Dowdell
K Edwards

Faculty Courses Committee

Associate Dean (Teaching and Learning) (Chair)

Associate Professor A Piper

Members

Dr G Anstis
Department of Physics and Advanced Materials
J Chelliah
Faculty Librarian
Dr J Kalman
Department of Chemistry and Forensic Science
P Meier
Director of Undergraduate Programs
Dr B Moore
Department of Mathematical Sciences
Dr A Pulkownik
Department of Environmental Sciences
Dr S Valenzuela
Department of Medical and Molecular Biosciences

Faculty Research Committee

Associate Dean (Research and Development) (Chair)

Professor G Skilbeck

Elected by faculty board

D Bishop
Postgraduate research student
Dr P Doble
Department of Chemistry and Forensic Science
Dr A Dowd
Department of Physics and Advanced Materials
Professor JT Ellis
Department of Medical and Molecular Biosciences
Associate Professor MJ Ford
Department of Physics and Advanced Materials
Associate Professor L Harry
Department of Medical and Molecular Biosciences
Associate Professor B Herbert
Proteomics Technology Centre of Expertise
Dr A Leigh
Department of Environmental Sciences

Ex officio members

Professor MB Cortie
Professor JP Dalton
Dr S Lal
Professor C Palmer
Professor E Platen
Associate Professor P Ralph
Professor CP Roux
Professor AM Simpson
Professor DJ Street

VICE-CHANCELLOR'S COMMITTEE

Vice-Chancellor

Professor RD Milbourne

Senior Deputy Vice-Chancellor and Senior Vice-President

Professor P Booth

*Deputy Vice-Chancellor and Vice-President (International)
(Acting)*

Emeritus Professor R Lynch

Deputy Vice-Chancellor and Vice-President (Research)

Professor SE Rowley

*Deputy Vice-Chancellor and Vice-President (Teaching,
Learning and Equity)*

Professor S Alexander

*Deputy Vice-Chancellor and Vice-President (External
Relations) and Registrar*

Dr R Dubs

*Deputy Vice-Chancellor and Vice-President (Corporate
Services)*

AM Dwyer

Deputy Vice-Chancellor and Vice-President (Resources)

P Woods

Chair of Academic Board

Professor T Clarke

Dean, Arts and Social Sciences

Professor T van Leeuwen

Dean, Business

Professor R Green

Dean, Design, Architecture and Building

Professor D Luscombe

Dean, Engineering and Information Technology

Professor A Johnston

Dean, Law

Professor J McKeough

Dean, Nursing, Midwifery and Health

Professor J Daly

Dean, Science

Professor B Milthorpe

Dean, University Graduate School

Professor M Tennant

University Librarian

Dr A Byrne

BOARDS OF CONTROLLED AND OTHER ENTITIES ASSOCIATED WITH UTS

accessUTS Board of Directors

Chair

J Francis

Managing Director

B McRae

Members

Professor D Dignam

Professor T van Leeuwen

Dr J Morrison

Secretary

RE Allsep

INSEARCH Ltd Board

Chair

M Williams

Managing Director

A Murphy

Members

D Hill

Professor A Johnston

D Leckie

Emeritus Professor R Lynch

P Woods

Secretary

LJ Hall

Sydney Educational Broadcasting Ltd Board of Directors

Chair

Dr R Dubs

Alternate Chair

C Trotman

Managing Director

P Shine

Company Secretary

J Tyler

Company directors

E Arnoney

Dr J Potts

E Snape

Volunteers' representative

P Nelson

UTS Child Care Inc Board

Nominees of the University

F Young (Chair)
to be advised (Alternate)
S Vella

Nominee of the UTS Union

R Trewick

Nominee of the Students' Association

E Lancaster

Nominees from each child care service

Kids' Campus Children's Centre (Kuring-gai)

M Wouters (Deputy Chair)

J Garner (Secretary)

Blackfriars Children's Centre (City)

M Paddon-Row

M dela Rama

Magic Pudding Child Care Centre (City)

J Coombes

S Leathem (Treasurer)

One nominee from the ABC

M McCluskey

UTS Union Ltd Board of Directors

(all directors are appointed by UTS Council)

Chair

Associate Professor G Riordan

Chief Executive Officer

T O'Sullivan

Treasurer

Emeritus Professor A Moon

Staff directors

S Kirk

P Parkhill

W Paterson

Student directors

(the president and vice-president positions are elected by the board from the seven student directors)

R Trewick (President)

F Evans (Vice-President)

C Chase

A Ho

S Natarajan

A Rybak

K Zreika

UNIVERSITY HONOURS

The conferral of honorary awards and titles provides an opportunity for UTS to recognise persons of outstanding accomplishment. Such recognition is given to persons who have made a contribution to the achievement of the University's mission, to scholarship or professional practice in one or more disciplines or professions of interest to the University, to the advancement of society in Australia or overseas, or to the life and objectives of the University.

The policy on University Honours is available at:

www.gsu.uts.edu.au/policies/universityhonours.html

Emeritus Professors of the University

RL Werner, AM, MSc, PhD (UNSW), DUniv (UTS), ASTC, FRACI (1988)

CD Field, BSc (R'dg), MSc (Lond), PhD (WI), FInstPMIBiol (1988)

R Parsons, AM, BA (Syd), PhD (Macq), FCN (NSW) (1989)

NC Stephenson, MSc (Syd), PhD, DSc (UNSW), FRACI (1989)

B Davis, BArch (Syd), FRAIA (1990)

TM Sabine, DSc (Melb), FAIP (1991)

GR Sutton, BE, MEngSc (UNSW), PhD (CUA), MAAS (1991)

RJ Breakspere, PhD (Exe), FRSC, CChem, FRACI (1993)

GW Bartholomew, BSc, LLB (Lond), LLM (Tas), DSU (Paris), of Grays Inn and the Supreme Court of NSW (1993)

KA Faulkes, ME, PhD (UNSW), MS (Ill), FIEAust (1994)

BS Thornton, PhD (UNSW), DSc (Syd), CPhys, CPEng, FInstP, FBCS, FACS, FRAeS, FIEAust (1994)

GR Kress, BA (Newc), DipGenLing (Lond), DLitt (Newc), DUniv (UTS) (1995)

A Pattison, MSc, PhD (Stan), DUniv (UTS), ASTC, FIEAust (1995)

DJ Fraser, BEc (Syd), MCom (UNSW), FCA, ACIS, FAIM (1995)

RD Guthrie, AM, DSc, PhD (Lond), DUniv (Griff), DUniv (UTS), HonLLD (Humber), FTSE, FRSC, FRACI, FAIM (1996)

J Unsworth, BSc (Wales), MSc (UMIST), PhD (Macq), CChem, CPhys, FAIP, FPRI, SMIEEE (1996)

ND Quarry, AM, BArch (Melb), MArch (Rice), LFRAIA (1996)

AG Shannon, AM, BSc, DipEd (Syd), MA, PhD, MLitt (UNE), CMath, FCP, FIMA, FACE, FAustMS (1997)

J Lumby, DipNEd (Armidale), BA (UNE), MHPed (UNSW), PhD (Deakin), RN, ICN, FRCNA, FCN (NSW), MINA (1998)

CE Deer, BA, MTCP, DipEd (Syd), PhD (Macq), FACE (1999)

DE Flint, AM, LLM (Syd), BSc (Ecs) (Lond), DSU (Paris), Solicitor of the Supreme Courts of NSW and England (1999)

PJ Parr, MSc, PhD (Belf), FIEAust, CPEng (1999)

RW Robertson, MA (UVic), FRAIPR, FATRI (2000)

VS Ramsden, BE, MEngSc (Melb), PhD (Aston) (2000)

EC Leitch, MSc (Auck), PhD (UNE), FGS (2000)

M Browne, BA, DipPsych (NUI), MLib (UNSW), PhD (Macq), FALIA, MIInfSc (2001)

BC Low, BSc, BEd (Qld), PhD (UNSW) (2001)

SL Bakoss, BE (Syd), MEngSc (UNSW), MS (Calif), PhD (UNSW), FIEAust, CPEng, MASCE (2001)

RJ McDonald, BSc(Hons), PhD (ANU) (2001)

AJD Blake, AM, BEd, MSc (Melb), PhD (Purdue, Indiana) (2002)

KW Yates, BSc, BE, PhD (Syd), FIEAust, CPEng, SMIRÉE, SMIEE (2002)

WR Belcher, BE, MEngSc (Qld), PhD (Lond), DIC, FIEAust, CPEng, MIEE (2003)

MJ Knight, DSc, PhD (Melb), FGS, MIE (Aust), MAIMM (2003)

L Johnson, BA (Syd), MEd (Qld), PhD (Monash), FAICD, FAAH (2004)

C Chiarella, BSc(Hons), MSc (Syd), MCom(Hons), PhD (UNSW) (2004)

G Caban, BA, MEd (Syd), DipEd (SydTeachColl), GradDipComm (NSWIT), MDIA (ED), AADM (2005)

AR Moon, BSc, PhD (Melb), FAIP (2005)

L Barclay, RN, CM, BA (ANU), MEd (Canberra), PhD (Flin), FACMI, FRCNA (2005)

AM Johnson, BAppSc (SAIT), MEdMgmt, PhD (Flin), MA(Hons), DSc (W'gong), FASM, FAIBiol (2005)

JK Debenham, MA, MSc (Dub), PhD (Syd) (2006)

DLA Barker, AM, LLB (Lond), MPhil (Kent), LLM(Hons) (Camb), DipLG (Kent), GradDipLegPrac (UTS), FCIM (1984), FCIS (1984), FAIM (1988), MCI Arb (1999), FACE (2002), FAICD (2004), Solicitor of the Supreme Court of NSW and High Court of Australia (2007)

EM Jacka, BSc, BA (Auck), PhD (Syd) (2007)

GB Smith, BSc(Hons) (UNE), PhD (Monash), PhD (honoris causa) (Uppsala), FAIP (2007)

JM Donoghue, RN, CM, BA(Hons) (Macq), DipNEd (UNSW), PhD (Syd), INDEN (Australian Committee Member) (2008)

R Lynch, DipPhysEd (W'gong TC), BEd(Hons), MEd (WAust), PhD (Ill) (2008)

JF White, RN, RM, AssocDipNEd (Cumb), BEd (SCAE), MEd (Syd), PhD (Adel) (2008)

Fellows of the University

B Finn, AO (1989)

P Fritz, AM, DipTech (Sc), BAppSc, DipTech (Com) (1989)

KJ Kirby, AO (1989)

KW Knight, AM, MEd (Syd), PhD (Qld), ALAA, FRAIPA, FSAG (1989)

Sir L Street, AC, KCMG, LLB (1990)

M Trask, AM, BA (UNE), MLib (UNSW), FLAA (1991)

G Ireland, LLB (Syd) (1992)

S Kerkyasharian, AM (1995)

AJ McRitchie, BA (Melb), FIDA (1995)

H Tsang, OAM (1995)

JJ Allen, BA, LLB, LLM (1997)

The Hon. PJ Baldwin, BA, BEE, MP (1998)

M Cornelius, BA (Syd), FAICD, FACS, FAIM (1998)

D McNeill, BE(Hons) (UNSW) (1998)

D Murray, BBus (NSWIT), MBA (Macq), FCPA, FAIB (1998)

J Green, BSc(Hons) (WAust), PhD (La Trobe) (1998)

MB Fay, BA, MEd (Syd) (2000)

PR Porter, BA, MA (UNSW) (2000)

DA Taylor (2000)

KS Peng, FCA, RA(M), CPA (2000)

KE Baker, BHealthAdmin, MEdAdmin (UNSW) (2004)

E Shing, BA(Hons) (HK), MBA (LondBus), DEB (Bulacan), HonDBA (IMC and Newc), FCMI (2008)

Honorary Doctors of Engineering (HonDEng)

GF Craig, AM, OBE, ASTC, CPEng, FIEAust, FRAPI, LGE, LGTCP (1995)

JG Nutt, AM, BE (Qld), PhD (Manc), HonDSc (Macq), HonFIE (Aust), FIStructE (UK), MICE (UK), FTSE, FRSA (2001)

Honorary Doctors of Laws (HonLLD)

Rt Hon. Lord G Slynne of Hadley, LLB, MA (Camb) (1991)

JH Wootten, QC, BA, LLB (Syd) (1993)

PJ O'Shane, AM, LLB (UNSW), LLM (Syd) (1993)

Sir L Street, AC, KCMG, KS&J, LLB(Hons) (Syd), HonLLD (Macq and Syd), FCI Arb (UK), HonFIA (Aust), HonDEc (UNE) (1998)

The Hon. Sir G Brennan, AC, KBE, BA LLB (Qld), HonLLD (Dub), HonLLD (Qld), HonLLD (ANU), HonLLD (Melb), HonDLitt (CQld), HonDUniv (Griff) (1998)

N Mandela (2000)

The Hon. Sir W Deane, AC, KBE, BA, LLB (Syd), DipIntLaw (The Hague), HonLLD (Syd), HonLLD (Griff), HonLLD (Notre Dame), HonLLD (Dub), HonDUniv (SCross), HonDUniv (ACU), HonDUniv (QUT), HonDUniv (WSyd), HonDrSacTheol (MelbCollDivinity) (2002)

The Rt Hon. JM Fraser, AC, CH, MA (Oxf), HonLLD (Sth Carolina), HonDUniv (Deakin) (2002)

The Hon. A Kwok-nang Li, MA, LLM (Camb), HonDLitt (HKUST), HonLLD (Baptist), HonLLD (Open HK), HonLLD (HK), HonDUniv (Griff), HonLLD (UNSW) (2005)

Honorary Doctors of Letters (HonLittD)

H Seidler, AC, OBE, MArch (1991)

The Hon. BO Jones, MA, LLB (Melb), DSc (Macq), FRSA, MP (1993)

I Moses, DiplSozWirt (Erlangen-Nurnberg), MA, PhD (Qld), GradDipTertEd (DDIAE) (1993)

The Hon. JN Button, BA, LLB, HonDBus (RMIT) (1995)

The Hon. EG Whitlam, AC, QC, BA, LLB, HonDLitt (Syd) HonDLitt (W'gong) HonDLitt (La Trobe), HonLLD (Philippines) (1995)

AS Suu Kyi, AC, BA, MA (Oxf) (1997)

P Chareonthaitawee, BSc, MD, DA, FFARCS, DRCS (1997)

M Dodson, LLB, BJuris (Monash) (1998)

Sir R Wilson, AC, KBE, CMG, QC, LLB (WAust), LLM (Penn) (1998)

His Excellency Dr Á Göncz, DLaws (Pázmány Péter University of Arts and Sciences) (1999)

WM Horton, AM, BA (Syd), HonDLitt (LaTrobe), FALIA (2000)

GM Murcutt, AO, LFRAIA, HonFAIA, HonFRIBA, HonFRAIC, HonFSAFA, HonDSc (UNSW) (2003)

I Serageldin, BSc (Cairo), MRP, PhD (Harv) (2004)

C Dixon, HonDLitt (UNSW), HonDLitt (Macq) (2006)

JM Coetzee, BA, MA (Cape Town), PhD (Texas) (2008)

Honorary Doctors of Science (HonDSc)

PC Doherty, AC, BVSc, MVSc (Qld), PhD (Edin), HonDVSc (Qld), HonDSc (ANU), HonDSc (Edin), HonDSc (Tufts), HonDSc (Warsaw), HonDSc (La Trobe), HonDSc (Lond), HonDSc (UAB), HonDSc (NCSU), HonDSc (Guelph), HonDSc (Penn), HonDSc (Mich St), HonDSc (Ill), HonDMSc (Rhodes), HonDPh (Kyorin), FAA, FRS, FRACP (2003)

RJ Howard, BSc, BSc(Hons), PhD (Melb) (2004)

RJ Batterham, AO, BE, PhD, HonLLD (Melb), AMusA, FAA, FTSE, FEng, FNAE, CPE, CE, CSci, FAusIMM, FISS, FICHEM, FIEAust, FAIM, FAICD (2006)

Honorary Doctors of the University (HonDUniv)

RL Werner, AM, MSc, PhD (UNSW), ASTC, FRACI (1988)

GR Kress, BA (Newc), DipGenLing (Lond), DLitt (Newc) (1992)

J Hirschhorn, DiplIng, DrTechSc (Vienna), FIEAust (1993)

ES Swinbourne, AM, ASTC, BSc(Hons), PhD, FRACI (1994)

JH Kaye, AO, BComm (Qld), MBE, MA, MSc (Soc) (UNSW), FSTC (1995)

A Curthoys, BA, DipEd (Syd), PhD (Macq) (1995)

MD Burchett, BSc, PhD (Syd), DipEd (UNE), FAIH, MAIBiol, (1996)

A Pattison, MSc, PhD (Stan), ASTC, FIEAust (1996)

RD Guthrie, AM, DSc, PhD (Lond), DUniv (Griff), HonLLD (Humber), FTSE, FRSC, FRACI, FAIM (1996)

BS Thornton, PhD (UNSW), DSc (Syd), CPhys, CPEng, FInstP, FBCS, FACS, FRAeS, FIEAust (1997)

DV Clark, AM, BSc(Hons) (Syd), PhD (UNSW), FRACI, FTS, FSCAE (1999)

RN Johnson, AO, BArch, HonDArch (Syd), LFRAlA, RIBA, HonFRAIC, HonFAIA (1999)

DH Lance, BEc (Syd) (1999)

PJ Parr, MSc, PhD (Belf), FIEAust, CPEng (1999)

BC Low, BSc, BEd (Qld), PhD (UNSW) (2001)

R Kemmis, BA(Hons) (UNE), MA (Essex) (2002)

M Trask, AM, BA (UNE), MLib (UNSW), FLAA (2002)

AJD Blake, AM, BEd, MSc (Melb), PhD (Purdue, Indiana) (2003)

L Johnson, BA (Syd), MEd (Qld), PhD (Monash) FAICD, FAAH (2004)

RW Robertson, MA (UVic), FRAIPR, FATRI (2005)

The Hon. Sir G Brennan, AC, KBE, BA LLB (Qld), HonLLD (Dub), HonLLD (Qld), HonLLD (ANU), HonLLD (Melb), HonLLD (UTS), HonDLitt (CQld), HonDUniv (Griff) (2005)

RA Johnstone, BA (Newc), PhD (Camb) (2006)

IF Sheppard, AO, QC, LLB (Syd), HonMA (KCAE) (2006)

JM Hughes, BSc (Syd), FACS, MBCS, MIEEE (2006)

JM FitzGerald, LLB(Hons) (Melb), LLM, PhD (Northwestern) (2007)

KJ Rennie, AM, FCA (2007)

R Cavalier, BA(Hons) (Syd) (2008)

Honorary Master of Arts

The Hon. IF Sheppard, AO, QC, HonMA (KCAE) (1989)

Honorary Masters of the University

A Berglund, BA (Syd), LTCL MACE (1993)

E Eder, BEc (Syd) (1993)

S Young, MA (Syd) (1993)

DG Peake, BA (Syd), MLib (UNSW) FLAA (1994)

M Waterhouse, BA(Hons) (Melb), MSc (Psych) (UNSW), MAPsS (1996)

M Hourihan, BA(Hons), MLitt (UNE), DipEd (Syd) (1996)

S Krisnachinda, BA (Ohio), MA (Oregon) (1997)

P Sinseubpol, BEd (Prasarnmit), MEd (Kasetsart) (1997)

UTS Distinguished Service Award

EA Brady, BSurv, MSurvSc, GradDipHigherEd (UNSW), MISAust (2007)

PL Healy, BE (NUI), DIC, MSc (Lond), MBA (UNSW), MIEAust, MAIPM (2007)

S Wallace (2008)

Note

The qualifications shown are those advised at the time of conferral, unless advised later.